

**Removal:
End of Sale Day**

**Wed-Fri. (7/15-7/17)
8:00 AM – 4:00 PM;**

**Mon-Tue. (7/20-7/21)
8:00-4:00 PM**

Terms: 15% BP Onsite, 18% BP Online.
Cash, NYS Check w/ ID, Visa/MC
(\$1,500 Limit), Wire Transfer. US Funds.

Note: \$35.00 processing fee for
foreign wire transfers.

Subject to errors & omissions.
All items sold AS IS WHERE IS, with no
guarantees or warranties. See website for
complete terms and conditions.

www.steevesco.com

Real Estate Available



24,000 SF Building (3,000 SF office / 21,000 SF Mfg.)
1-High Bay Drive in Door, Crane Bay, Heavy Power, Clean Bldg.
Month to Month Tenant Occupying Crane Bay only.

\$875,000

Call Mary Steeves, Executive Realty Group, (585) 381-1710
for more information.

**STEEVES
&
COMPANY**
AUCTIONEERS • APPRAISERS • EST. 1951

ONSITE & ONLINE PUBLIC AUCTION

PLANT CLOSED – COMPLETE WELL-MAINTAINED MACHINE SHOP

Assets of: **Dynak, Inc.**
33 Saginaw Drive, Rochester, NY 14623

TUESDAY, JULY 14TH @ 10:00 AM

Inspection: Monday, 7/13 9:00-3:00 PM & Sale Day Beginning @ 8:30 AM

ONLINE BIDDING AT:



Cincinnati Series 2 Arrow VMC



Fadal VMC-3016FX (2007)



Hurco VM1 VMC (2005)



Cincinnati 2H-40 NC Horizontal Mill



Cincinnati Arrow 500 CNC VMC



Fadal VMC 2216 FX (2007)



Fadal MC4020FX-5 (2007)

**ONSITE & ONLINE
PUBLIC AUCTION**
Assets of: **Dynak, Inc.**
33 Saginaw Drive, Rochester, NY 14623
**TUESDAY, JULY 14TH
10:00 AM**
Inspection: Monday, 7/13 9:00-3:00 PM &
Sale Day Beginning @ 8:30 AM



www.steevesco.com

Sale Sold & Managed by:
STEEVES & COMPANY, INC.
2507 Browncroft Blvd., Suite 202, Rochester, NY
(585) 381-1710 Fax: (585) 381-2678
Toll Free: (877) 4-STEEVES

Presorted
First Class Mail
U.S. Postage
Paid
Rochester, NY
Permit No. 357



1 of 6 Hardinge HLV Lathes

Clausing 20x72" Toolroom Lathe

Jakobsen 10x24" Hyd. Grinder

Danobat 10x20" ID/OD Grinder

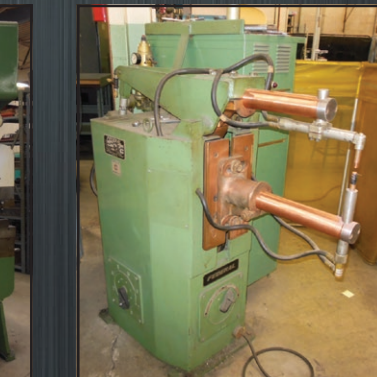
3000# Solid Tire Forklift

Amada 8x1/4" Shear

Promecam 4'x12 ga. Press Brake

Wysong HFB5-100 Hyd. Brake

Donau Radial Arm Drill



1 of 4 Clausing 3VS30 Mills

Moore #3 Jig Borer

Clausing 6x18" Grinder

Kondia CNC Miller

Greenerd No. 4 Arbor Press

Clausing Vertical Miller

K.O. Lee BA960 T&C Grinder

DiAcro 14-72 Press Brake CNC Backgag

Federal 50 KVA Welder



View of Toolroom

View of Office Furniture

Numerex 28x28x18" CMM

View of Cabinets

Multi-Spindle Drills

Blast Cabinet

Chicago 412 Hand Brake

Strippit Sonic Fabricator

Strippit Super AC Fabricator

MACHINING CENTERS

- Cincinnati 2H-40 Cintimatic NC Horizontal Machining Center, S/N 55131H55W-0006, Acramatic 5 Ctrl, 31" Table, 85-3800 RPM, 31" x 98" Table, 85-3800 RPM
- Hurco Model VM1 CNC Vertical CNC Machining Center, S/N H-V11063 (2005), ATC, Max Ctrl, 14 x 30" Table
- Cincinnati Arrow Series 1250C2 CNC EKK Vertical Machining Center, S/N 7064-A00-Kt0145, Acramatic A2100 Ctrl, ATC, 24 x 54" Table
- Fadal Model VMC2216FX CNC Vertical Machining Center, S/N 012006109241 (2006), Ge/Fanuc OI-MC Ctrl, ATC, 13 x 36" Table
- Fadal Model VMC3016FX CNC Vertical Machining Center, S/N 012007019606 (2007), Ge/Fanuc OI-MC Ctrl, ATC
- Cincinnati Arrow 500 ERH CNC Vertical Machining Center, S/N 7042-C00-94-0036, ATC, 20 x 27" Table
- MAG Fadal Model VMC4020FX-5 CNC Vertical Machining Center, S/N 012007101215 (2007), Ge/Fanuc OI-MC Ctrl, ATC, 20 x 43" Table
- Large Quantity of Tooling

CNC & MANUAL MILLS

- (6) Bridgeport Model J Vertical Millers with XY DRO
- Clausing Model 3VS08 CNC Vertical Mill, S/N 111009 with Acu-Rite Controls, 10 x 54" Table, Power Drawbar
- (1) Clausing Model 3VS08 CNC Vertical Mill, S/N 111008 With Acu-Rite Controls
- (2) Clausing Model 3VS30 CNC Vertical Millers with Acu-Rite Controls
- (1) Clausing Kondia Model CNC FV-1 CNC Vertical Mill, S/N X-433, Dynapath Delta Ctrl

LATHES

- (6) Hardinge Model HLV-H Toolroom Lathes with Acu-Rite X-Y DRO
- Clausing Colchester 20" X 72" Engine Lathe, S/N 7/0017/0023 with DRO, Chucks, Collet Chuck, Steady Rest, Etc.
- (2) Hardinge Model HC Variable Speed Chucking Lathes (Wide Dovetail Bed), Lever Collet, & Newall DRO

BRAKES

- Pomecam Model RG25-12 Ga. Hyd. Press Brake, S/N 02-025, 46"
- Large Assorted Press Brake Punches & Dies
- Diacro Model 14-72 Hyd. Press Brake, S/N JG1124 With Dyna-Bend I CNC Back Gage
- Chicago Dreis & Krump Model 412 Hand Operated Bending Brake
- Wysong Model HFB5-100 Hydraulic Power Press Brake, S/N HF150-10, DRC Dynabend Gauging System (Like New)

SHEARS

- Pexto Model 12U14 Power Squaring Shear, S/N 6350T8 with Squaring Arm & Sheet Supports
- Amada Model M-2560 Power Squaring Shear, S/N 2560500 (1983), Front Squaring Arm, Power Digital Back Gauge, 8' x 1/4" Cap.
- Di-Acro Model 4 (24") Hand Operated Shear, S/N 1-2465, Back Gauge

PUNCHES

- Strippit Super AC Model 107920.005 Single Punch/Fabricator, S/N 2167101687 with Assorted Punches & Dies
- Strippit Sonic 18/30 Punch/Fabricator, S/N 34221269 with Assorted Punches, Dies & Duplicator
- Di-Acro Model 2 Hand Operated Punch
- (2) Di-Acro Model 1 Hand Operated Punches

WELDERS

- Miller Delta 302 CV/DC Mig Welder
- Lincoln Precision Tig 275 Tig Welder
- Federal RA 3-18 Rocker Arm Spot Welder, S/N 661923-10, 50KVA, 18" Throat, 220/3/60 AC
- Branson Series 400 Ultrasonic Welder
- Branson Sonifier 227 Ultrasonic Welder, J-32A Power Supply
- Acorn 5' X 6' Layout Plate with Stakes

TOOLROOM DRILLS

- Edlund 2F-15 VS Toolroom Drill, S/N 411, 25 x 26" Table, 80-2000 RPM
- Clausing Model 2276 VS Toolroom Drill
- Cincinnati Royal 18" Six Spindle Drill Press, 8' Production Table
- Powermatic Model 1200 20" Vari-Speed Two Spindle Drill Press
- Donau Model DR32 Sensitive Radial Arm Drill Press, S/N 690-2, 29 x 43" Table, 60-1800 RPM

SAWS

- Rockwell Delta Model 34-803 10" Uni-Saw Table Saw, 220/1/60 AC
- Eisele Model VMS-300PV (12") Vertical Stroke Cold Saw, S/N 8447

GRINDERS

- Danobat Model RE-500A (10" X 20") Hydraulic ID/OD Cylindrical Grinder, S/N 92 (1968)
- Jakobsen Model SJ-30 (10" X 24") Hydraulic Power Surface Grinder, S/N EF1053, Fine Pole Perm Magnet Chuck, OTW Dresser
- Clausing Model CSG-618H Hand Feed Surface Grinder (2010), Perm Magnet Chuck
- K O Lee Model BA-960 Tool & Cutter Grinder, S/N 9727-466, MTR Driven Wrkhd, Misc. Tooling

AIR COMPRESSORS

- (2) Ingersoll Rand Type 30 (10 HP) Horiz. Tank Mount Air Compressors, S/N 30T637439, 30T600577

JIG BORER

- Moore Model B18 (#3) Vertical Jig Borer, S/N B1635, Moore DRO System
- Moore Tool Storage Cabinet & Assorted Tooling

NOTCHERS

- Pro Notch 12 X 12" Power Notcher (Late Model)
- Diacro 6x6" Hand Notcher

ROLLS

- Niagara 2" X 24" Hand Bending Roll
- Dynak Model PSR-5016 3" X 51" Power Slip Roll

INSPECTION EQUIPMENT

- Nippon Kogaku Scope; Rockwell Jr Hardness Tester
- Numerex 28x28x18" CMM, S/N 880400081 with 2013 Software
- Jones & Lamson Topic 14" Optical Comparator
- Goko LP-II Bench Optical Comparator
- 30 X 60" 2-Lip Surface Plate
- Asst'd Small Inspection Tools - Micrometers, Verniers, Height Gauges, Pin Gauges, Gauge Stands, Calipers, Bench Type Surface Plates, Parallels, V-Blocks, Angle Blocks, Collet Fixtures, Etc.
- 36" X 30" X 6" 2 Ledge Black Granite Surface Plate, Portable Floor Stand
- Mojave 36" X 24" X 4" Black Granite No Ledge Surface Plate, Portable Floor Stand
- Metroplate 72" X 48" X 10" 2 Ledge Black Granite Surface Plate, S/N 16142, Portable Floor Stand

MATERIAL HANDLING

- Economy Foot Operated Hydraulic Platform Lift
- (2) Crown Hand Hydraulic Pallet Jacks
- Yale Model GLC030CGJUAE077 LP Gas Powered Forklift Truck, S/N N404545, Hard Tires, Safety Cage, Triple Stage Mast w/ Sideshifter, 3000# Cap., 172" Lift

VEHICLE

- 2005 Chevrolet Astro Van Package Van, VIN 1GCDM19X25B114508 (130k miles)

MISCELLANEOUS

Johnson 142-5 Gas Heat Treat Oven; Blue M Electric Batch Drying Oven, 65 Degrees; Pen-Serter Series 4 Press; Famco Model 2 Hand Operated Arbor Press; Greenerd Model 4 Hand Operated Ratchet Type Arbor Press; Bostitch Stapler; Strapping Set; 6" Bench Grinder; Assorted Clamps; Welding Table; Curtain; Motorized Reamer; Delta Bench Drill; Hankison Refrigerated Air Dryer; Heavy Duty Single Ear Material Storage Rack; Delta 6" X 48" Belt Finisher, Zero Blast Model B-600-F Blast Cabinet Dust Collector; Delta Cabinet Type Dust Collector; Dbl. End Buffing Jack; Bandsander 1" Belt Finisher; Fowler Cuttermaster End Mill Grinder, Kennedy Cabinet; Rockwell Delta 6" X 48" Belt Finisher; Black Diamond Bench Model Drill Grinder; Branch Dahlstrom Bench Type Hand Tapper; Becker Model U70sa Vacuum Pump; 42" Dbl. End (2 HP) Buffing Jack; Richards Multi-Form Hand Operated Bench Type Steel Rule Bender; Asst'd. Double End Grinders

OFFICE EQUIPMENT & MISC.

Desks & Tables; Assorted Chairs; Credenzas; File Cabinets; Assorted Cabinetry; Xerox 914 Copier; Check Writer; Fax Machine; Drafting Tables; Hewlett Packard Designjet 600 Large Format Printer; Xerox 2510 Large Format Copier

Factory Furniture & Equipment: Benches; Cabinetry; Shelving; Shipping Equipment; Scale; Light & Medium Duty Adj Shelving, Blue Print Storage Cabinets, Benches, Nylon Strapping Cart, Step Ladders, Drafting Tables W/Mutoh Machines, Bench Type Drill Grinder, Double Door Storage Cabinets, Cyclone 1 Ton Chain Falls, Milwaukee Magnetic Base Drill, Laminate Top Workbenches, Small Parts Cabinets, Wood Top Steel Leg Workbenches, Etc.

ONLINE BIDDING AT:

